

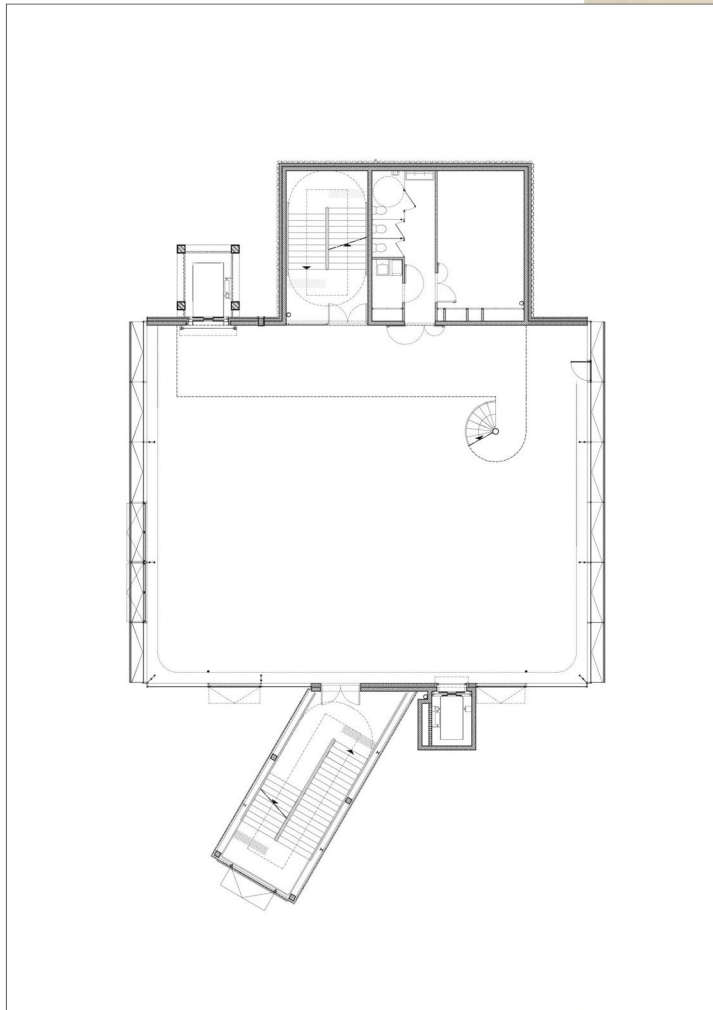
A close-up photograph of human skin, showing fine details like pores and hair. The skin is light-toned and occupies most of the frame. A dark, possibly black, object is visible in the upper right corner, partially obscuring the skin. The text is overlaid on the skin.

(HYPER)COMFORT

Stéphanie Bru

FORUM SIA FSU FSAP BÂTIR + PLANIFIER

Two main kinds of space
New generation Research Center, Caen, 2015

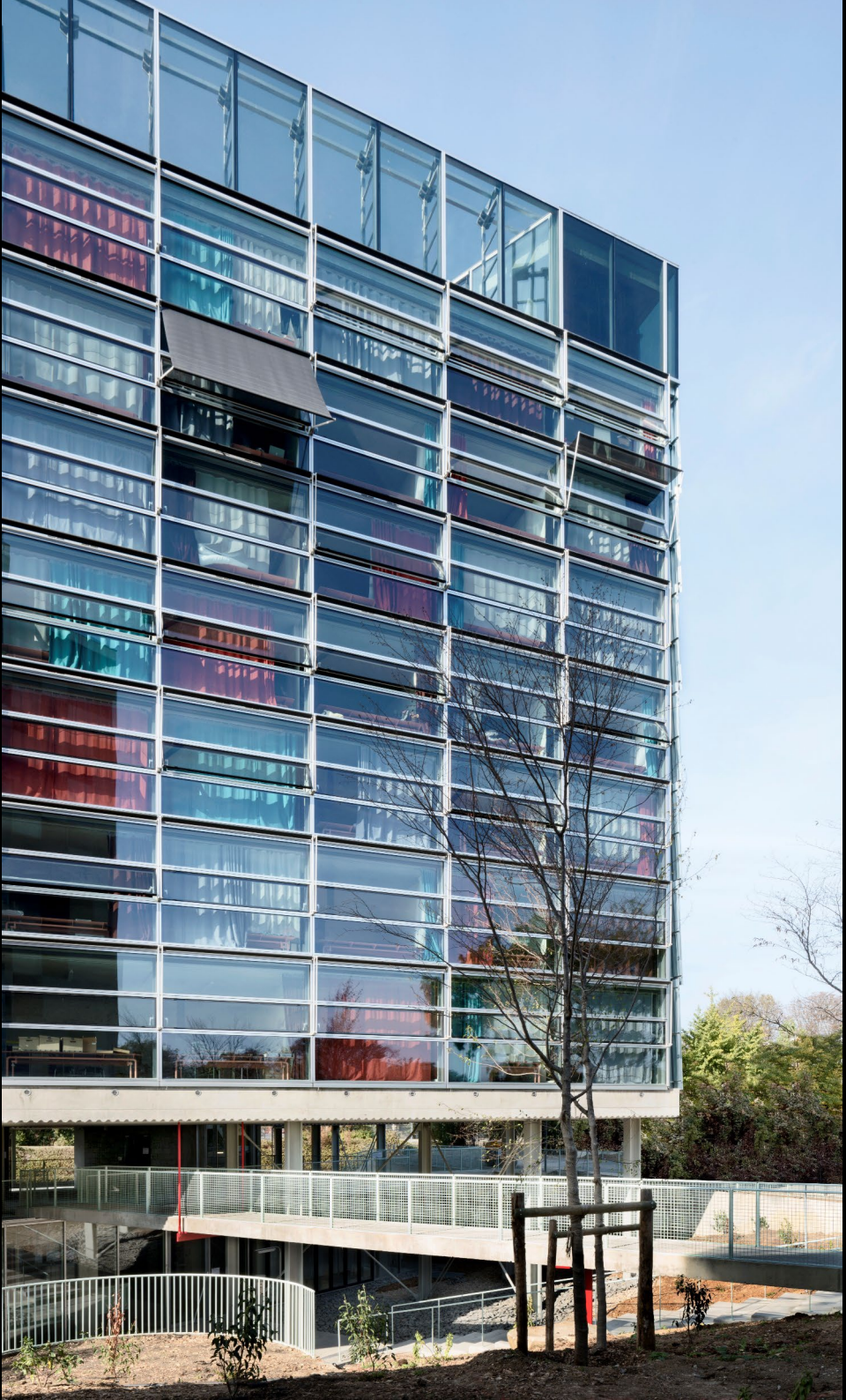




Two main kinds of space
Residence for students and reversible carpark in palaiseau,, Bruther, 2020



Are serving spaces only utilisation?
Residence for Research in Paris, Bruther, 2018



Putting together : mise en abyme of autonomy
Residence for Research in Paris, Bruther, 2018



An envelope more than a facade
25 housing units in Paris, Bruther, 2018

An envelope more than a facade
25 housing units in Paris, Bruther, 2018



An envelope more than a facade
25 housing units in Paris, Bruther, 2018



An envelope more than a facade
25 housing units in Paris, Brühler, 2018





Isolating is about creating a microcosm
New Generation Research Center, Caen, Bruther, 2015



Atmospheres anatomies
New generation research in Caen, Bruther, 2015



The ultimate communication: toward exterior
New generation research in Caen, Bruther, 2015



The ultimate communication: toward exterior
New generation research in Caen, Bruther, 2015